

CS share protocol settings :

Edit CCcam+Newcamd accounts :

1. Prepare an available Cccam code and select it ,as following code format:

C: test.dm700.com 63001 ah4Cf5hCh e85e1104D yes

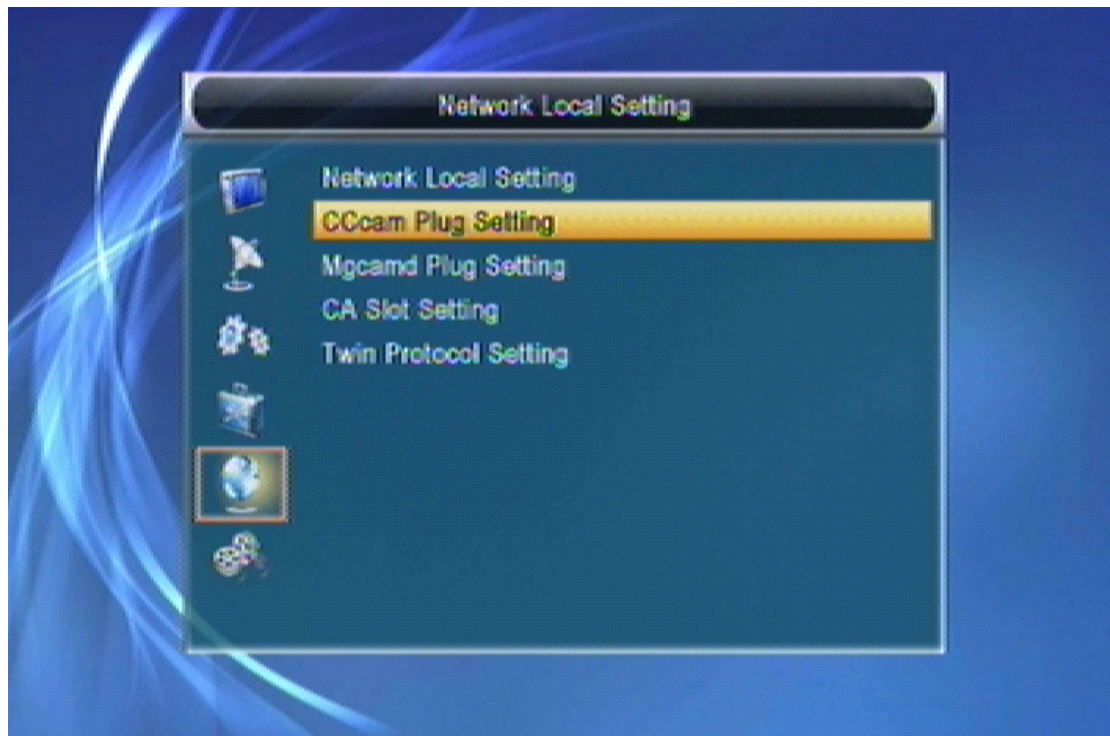
N: test.dm800.com 12000 user1008 password102 01 02 03 04 05 06 07 08 09 10 11 12 13 14

2. Use Wordpad to open “Cccam.CFG” file , and copy the available code into the wordpad and save it .

3. Then copy the Cccam.CFG file with available code into your U disk root list.

4. Connect the USB driver with the HD model's usb port .

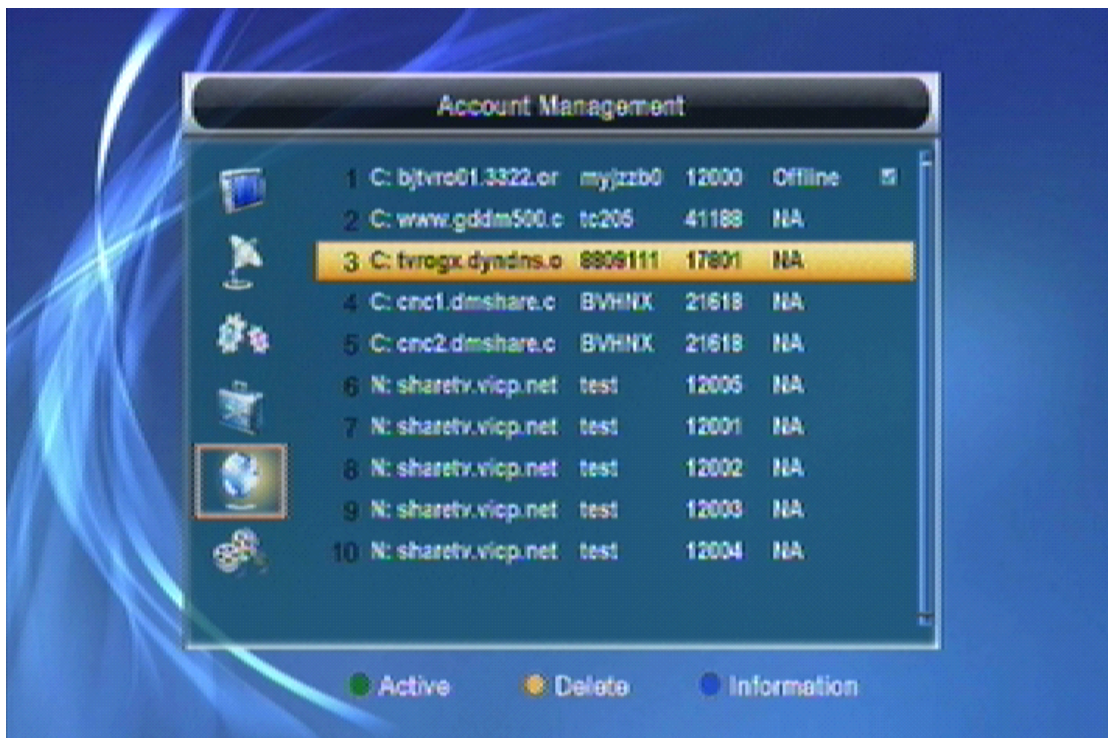
5. Press "menu" into Cccam setting ,select Cccam Plug Setting and OK,see the Pic. 1



6. Select read CC cam.cfg From USB and press OK ,see the Pic. 2



7. After read the available code ,please select Account Management and press OK.see Pic3.

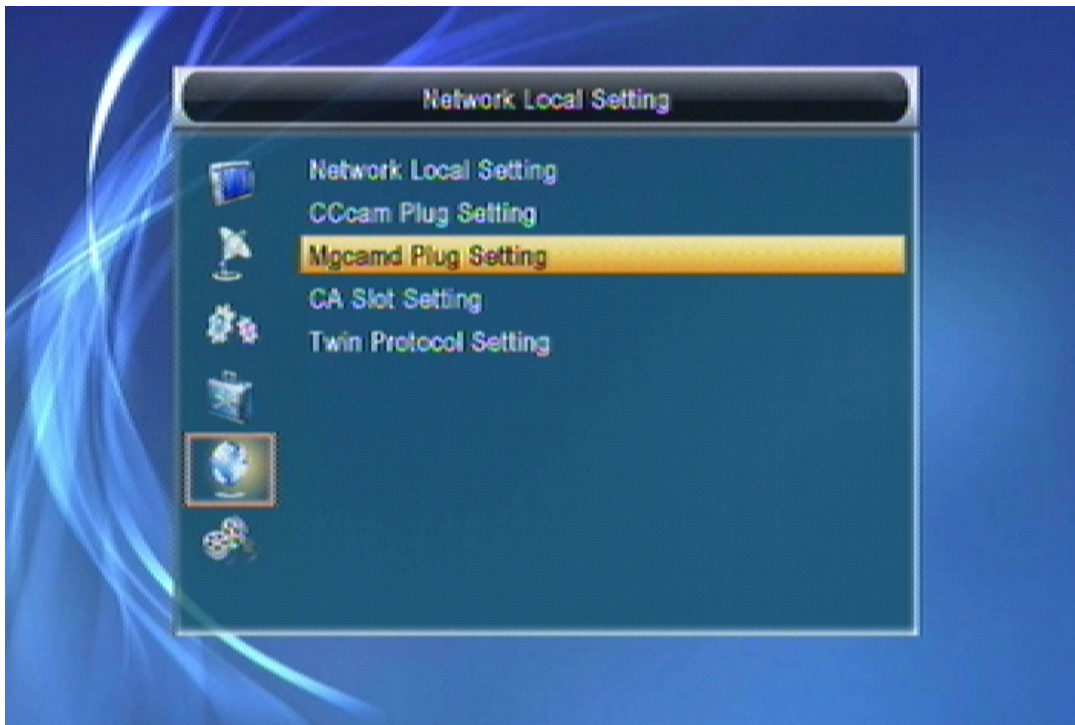


8. You can select maximum 4 CCcam accounts at one time ,but for newcamd accounts not be limited.After activate the sharing accounts.

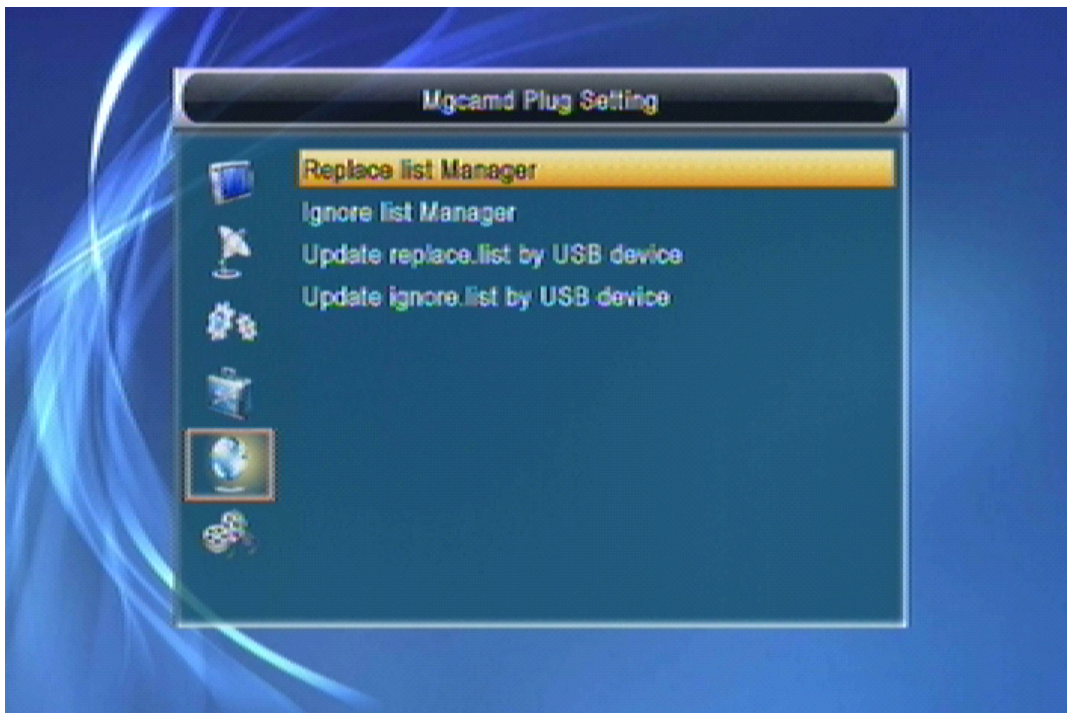
9. For MGcamd Plug setting.

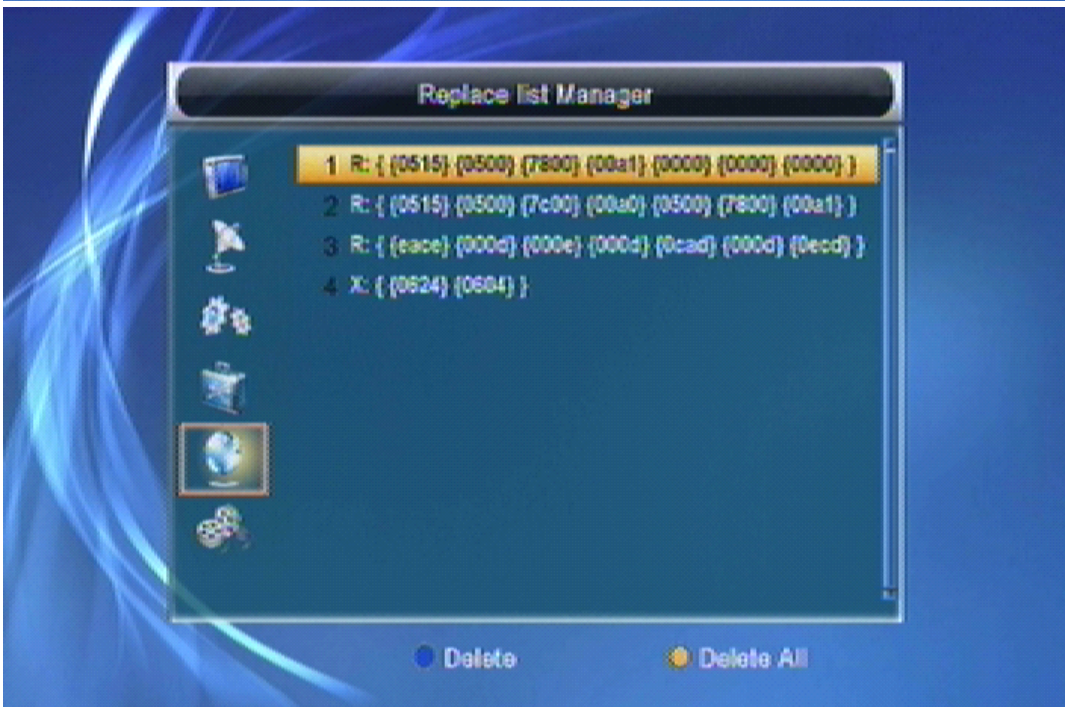
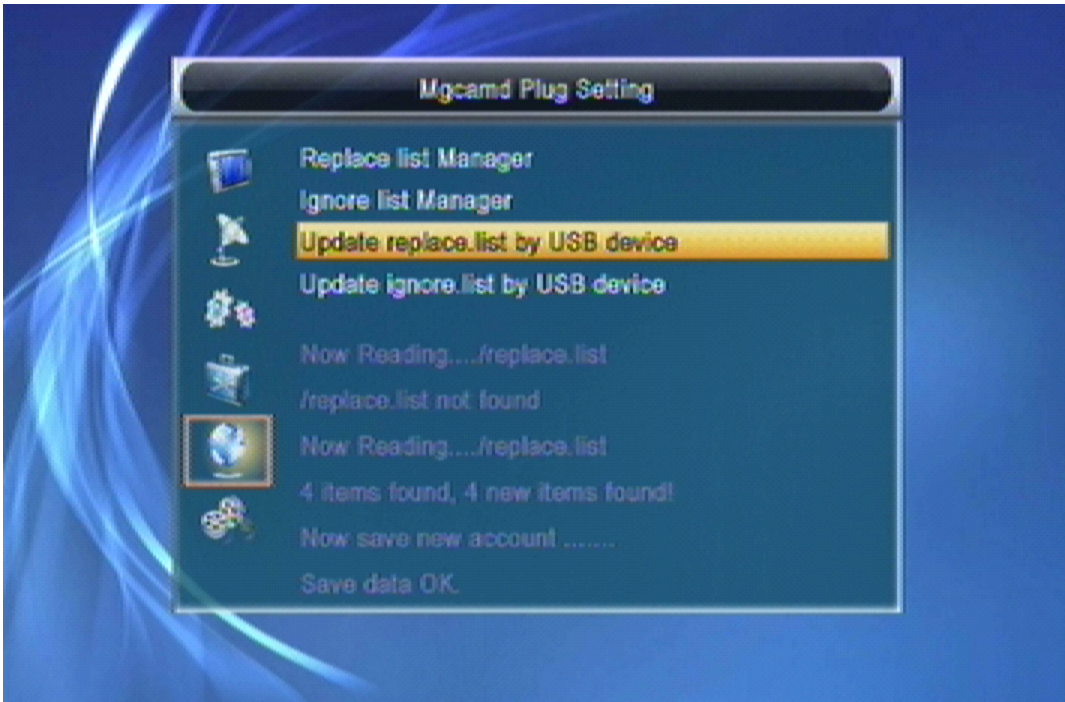
Our enable Mgcamd protocol for patch CCcam . Some channels for Europe , the channels decoded

don't use actual CAID , but used other CAID, so our need a replace.list to patch the actual CAID to other .



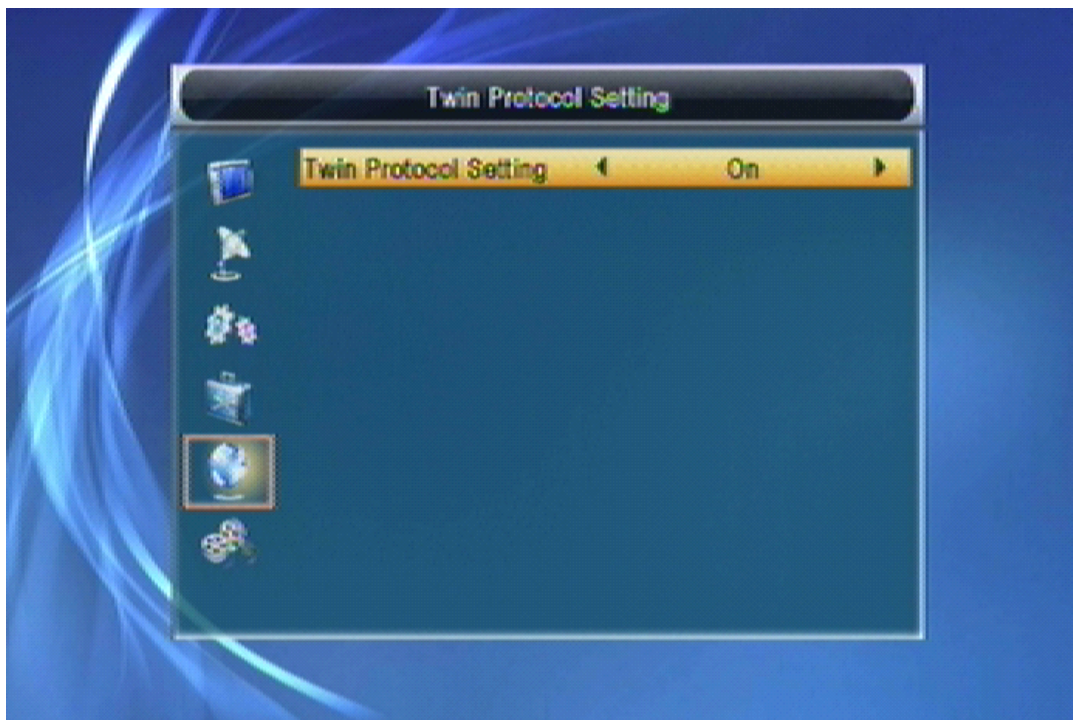
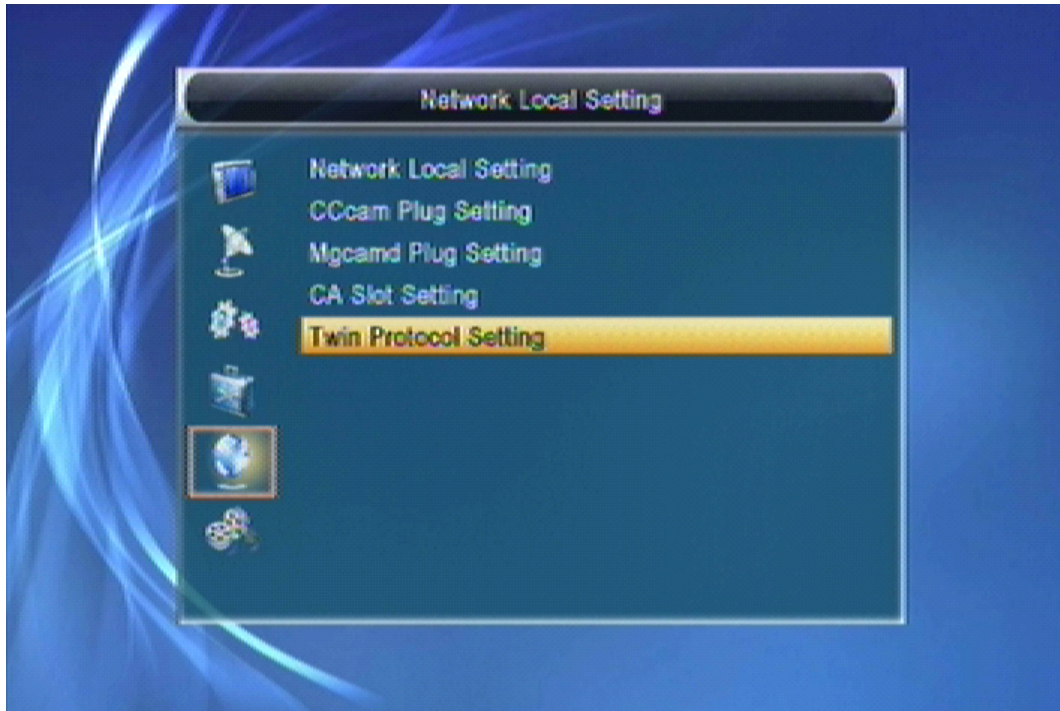
10.Edit and Copy the replace.lst and Ignore list to U disk root list, then press " update replace.list by USB device or Update ignore.list by USB device" to load the files and save the files to STB.





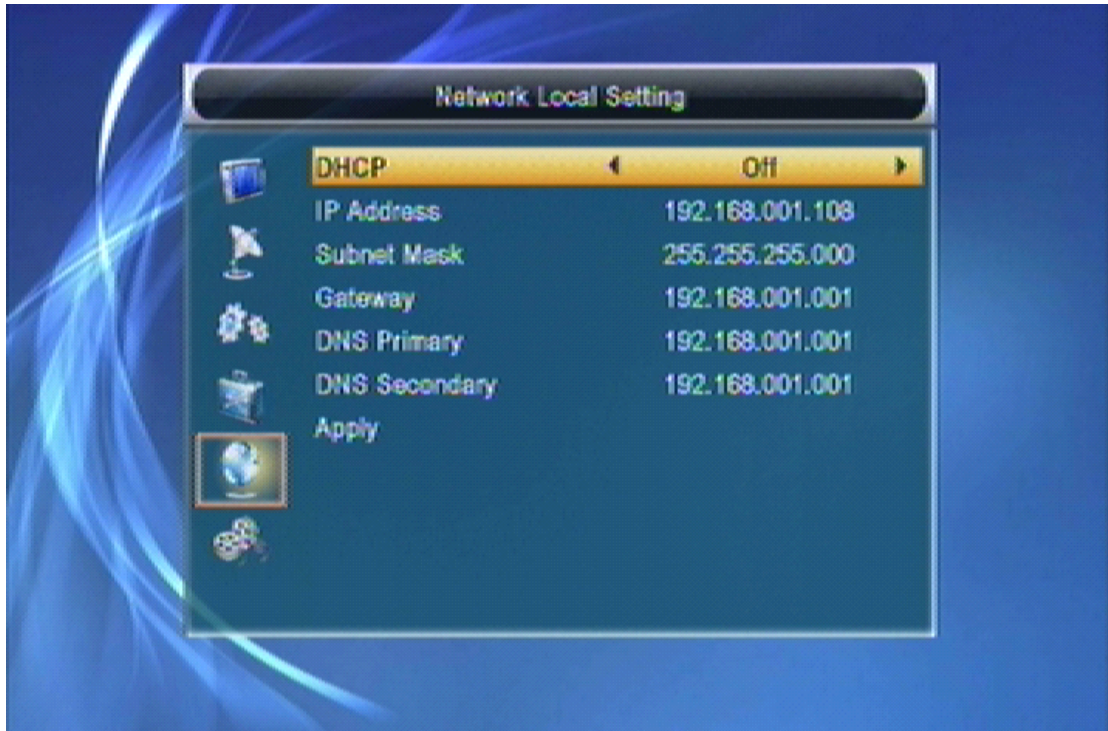
11. Twin protocol:

Twin protocol is satellite share protocol, user need a satellite dongle connect with serial cable RS232 to the STB's Serial prot. Then select "on" the function.

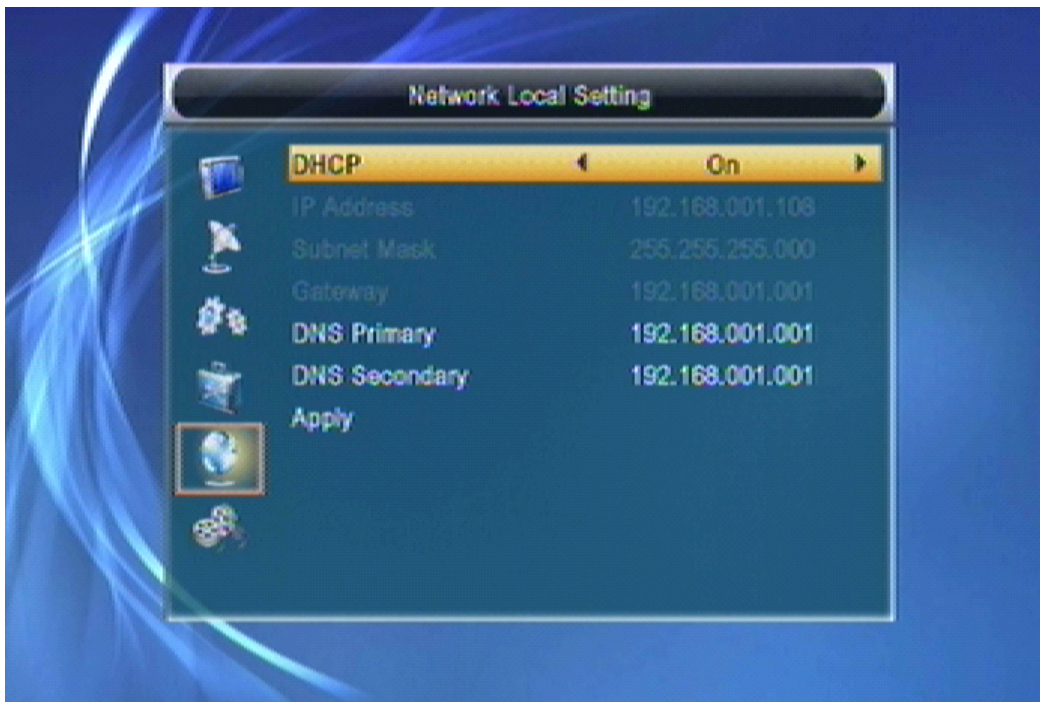


12. Network Local settings:

Select Network Local Setting ,and press OK.see the Pic 5.



11. At DHCP ,select “ON” ,and then select “Apply “ ,press OK.



When everything is ready ,please press “Standby” ,then reboot the model again .
So the sharing setting is finished .